

CARDONA COMMUNITY CENTRE

卡多纳社区活动中心

设计单位：
santamaria . arquitectes

设计师：
Pere Santamaria

项目地点：
欧洲，西班牙，卡多纳

业主：
卡多纳市议会

建筑面积：
565 m²

摄影：
Francesc Rubí

Design Company:
santamaria . arquitectes

Designer:
Pere Santamaria

Location:
Cardona, Spain, Europe

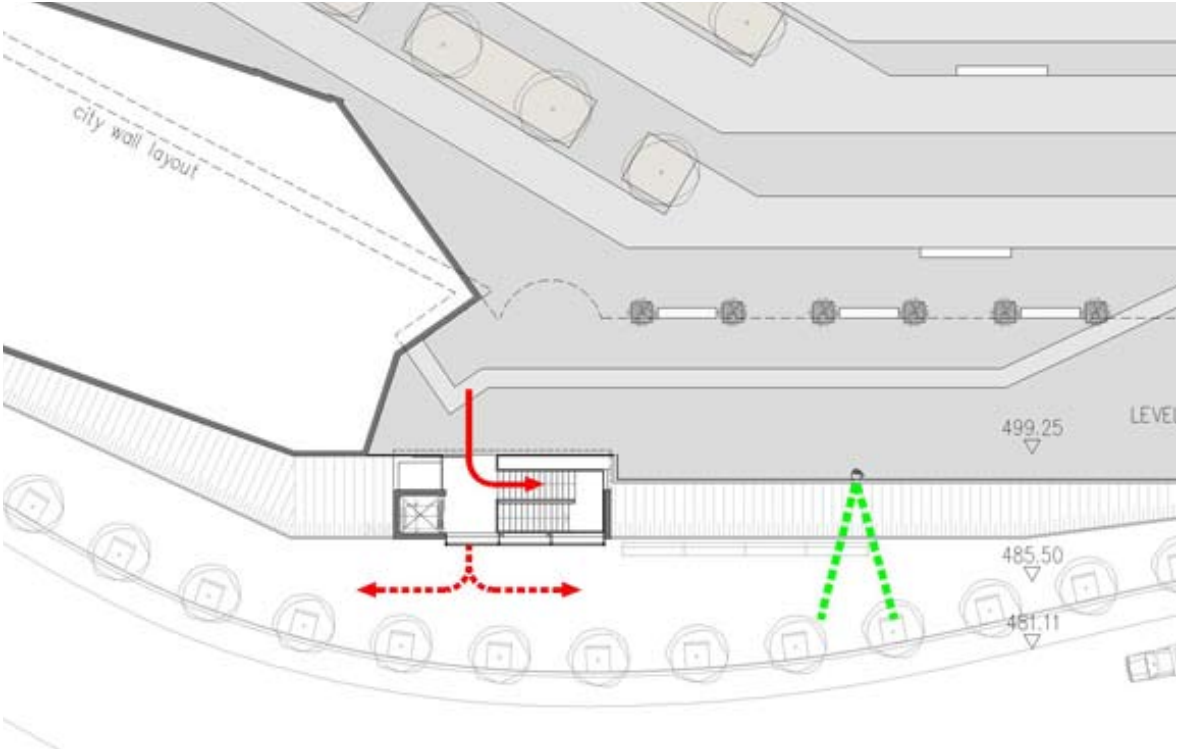
Client:
Cardona City Council

Building Area:
565 m²

Photographs:
Francesc Rubí

设计透视：

根据实际情况进行改造；利用高差将建筑隐藏于广场下，有效的利用了空间；成为上下空间的连接枢纽。

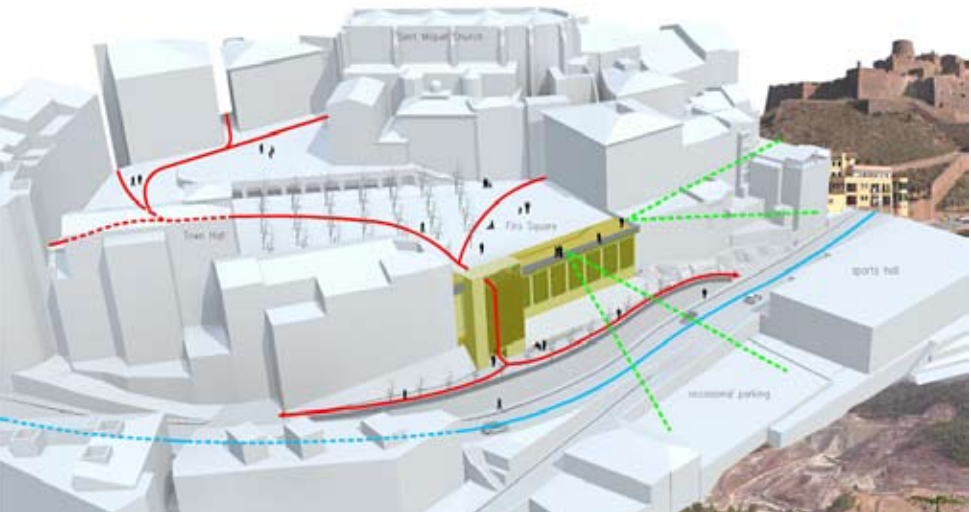


交通分析图 TRAFFIC ANALYSIS



该建筑为直角结构，上下两层占地282.73 m²，正面朝南，面向Miracle 路，房前仅有43.23 m。这栋楼始建于20世纪60年代Fira 广场的防土墙倒塌之后，以前被用作老年中心，没有电梯，唯一可以上下的通道在一层。楼的后面有一个圆形建筑，里面的螺旋梯把Fire广场和建筑的入口处水平连接在一起。这座圆形建筑就矗立在广场上，阻挡了从楼顶观赏风景的视线。

The building is a rectangular volume with a 282.73 m² site area. It is two storey and it has an only 43.23 m frontage facing south to the Miracle road. It was built in the 60 s, after the collapse of the retaining wall of the Fira Square. Previously, the building was occupied by the Senior Center, with access by the ground floor and was not having elevator. A circular volume placed on the back of the building was incorporating a spiral staircase that connected the Fira Square with the level of access to the building. This volume was getting up in the square, obstructing the scenic viewpoint placed in the trafficable roof of the building.





在尊重原有建筑结构的基础上，该项目仅对建筑表面和内部进行了修整。为了改善从屋顶观赏广场的视角，设计师移除了带螺旋楼梯的圆形建筑，取而代之地在建筑的前方加盖了一座既有楼梯又有电梯的直角形建筑。新的垂直连接核心同时解决了每层楼的交通问题，并且将Fira广场和Miracle路较低的地方、运动场及临时停车场连在一起。

为了凸显建筑的视觉效果，在南面的墙上把上下两层的窗户打通，变大之后的墙洞被金属框包裹着，既增加了纵深效果又加强了外墙的视觉效果。窗户和新的垂直连接核心都有金属条支撑的双层外板，保护楼内免受南边的太阳辐射，确保观赏城堡和盐谷时的特殊视觉效果。

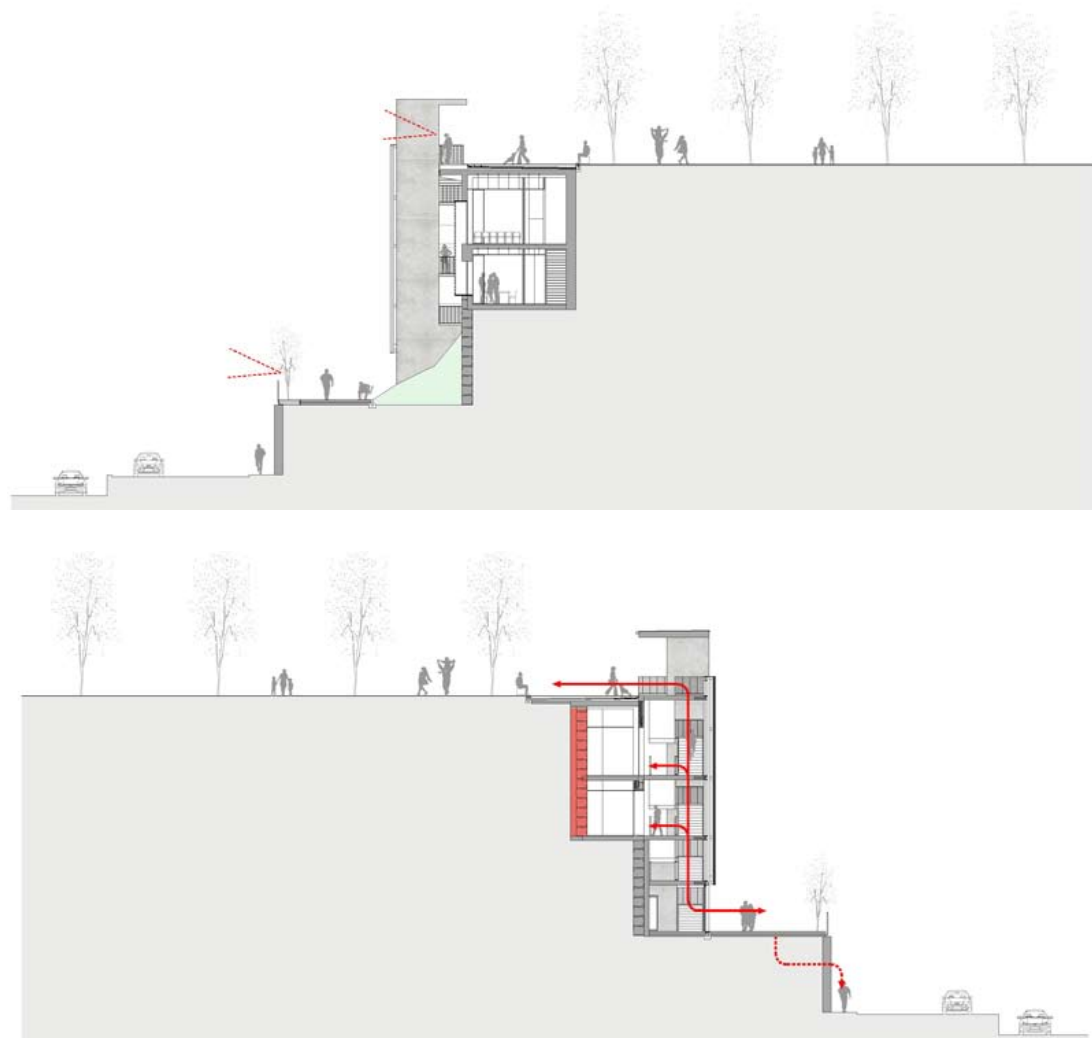
参照整体的外部设计，该项目把建筑的基底与斜坡的绿化风景结合在一起，在小径的周围配置了长椅和树木。

The project respects the original volume of the building and only the facade and interiors have been adapted. The volume corresponding to the circular spiral staircase is removed from the trafficable roof to benefit the viewpoint space in the square. Instead of it, a new rectangular volume with staircase and elevator has been attached to the front of the building. The new vertical connections core simultaneously solves the mobility access to each of the floors and it also relates, through a weight of 14m, the level of the Fira Square with the lower area of the Miracle road, with sports area and occasional parking.

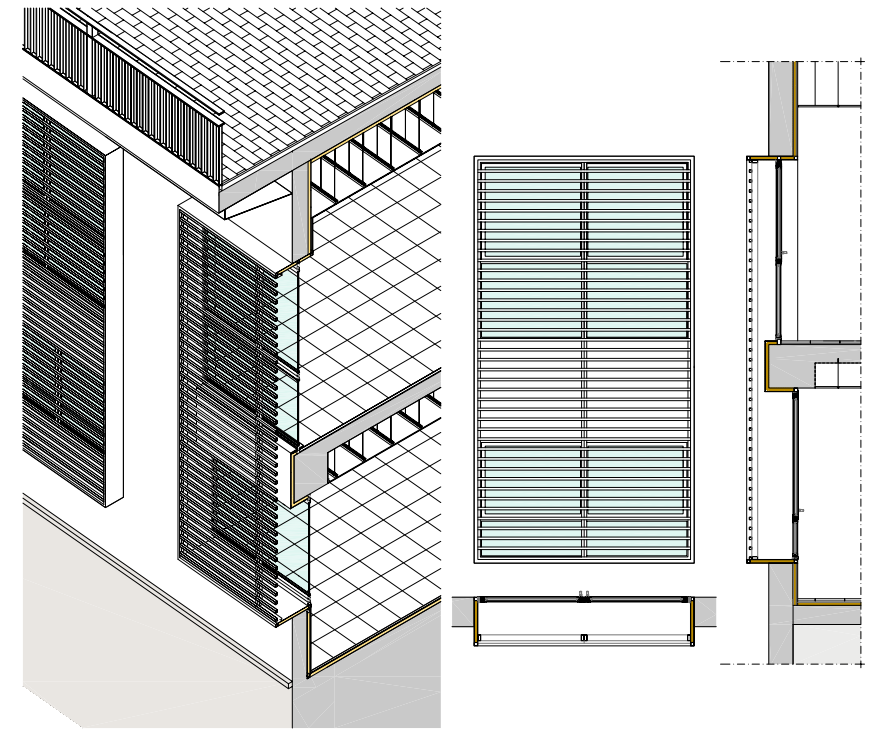
In order to provide the building with a more significance image, in the south facade windows are joined between the two stories, creating bigger holes emphasized by metal boxes giving depth and strong appearance to the facade. The windows and the new vertical connections core have a double skin consisting of metallic strips to protect the building from south solar radiation and to guarantee the privileged views to the castle and the saline valley.

With reference to the exteriors, the project clans up the base of the building with the landscaping of the slope and the conditioning of a footpath with benches and trees.

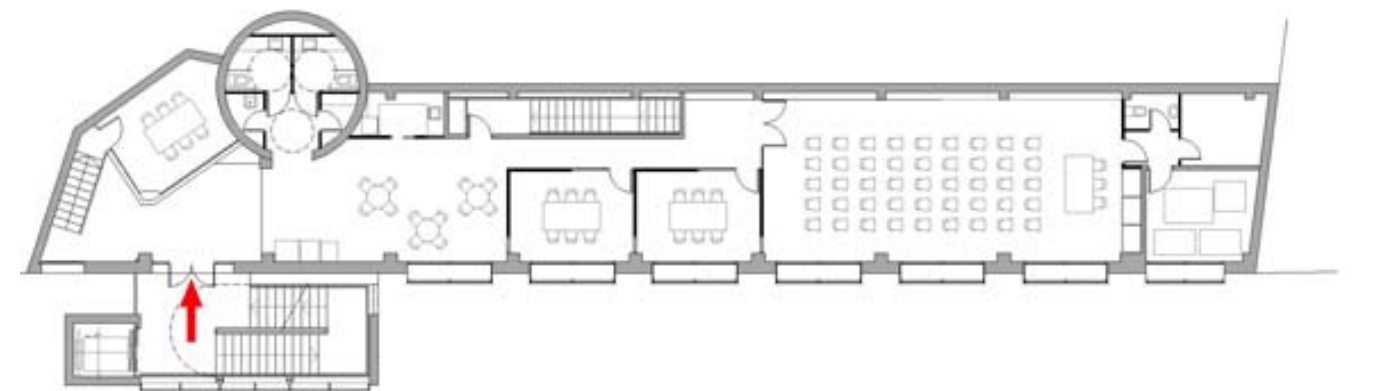




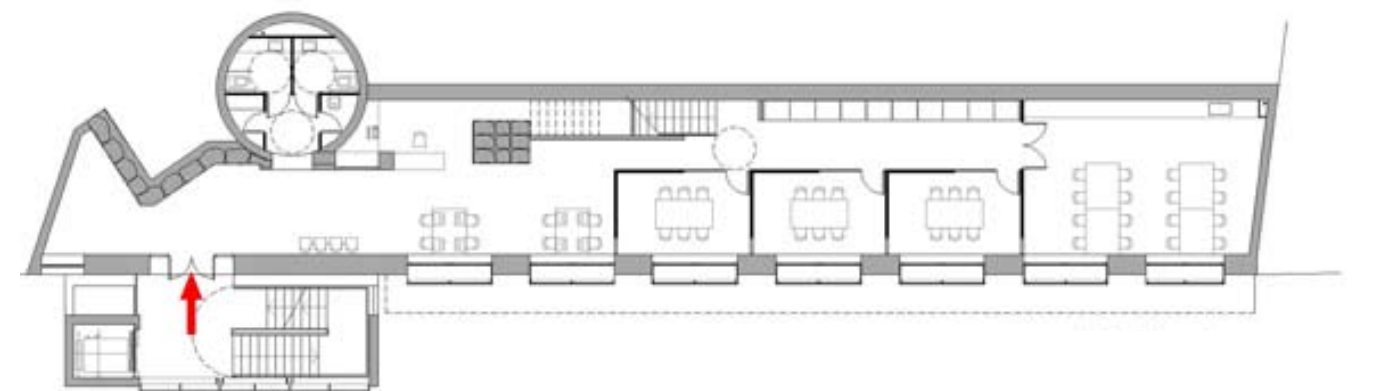
剖面图 SECTION



窗户细部构造图 WINDOW DETAIL



一层平面图 1ST FLOOR PLAN



二层平面图 2ND FLOOR PLAN