

Restoration of Community Centre and New Accesses to Historic Downtown

社区中心的改建

The building is a rectangular volume with a 282.73 m² site area. It has two stories. It was built in the 60s, after the collapse of the retaining wall of the Fira Square. Previously, the building was occupied by the Senior Center, with access by the ground floor and was not having elevator. A circular volume placed on the back of the building was incorporating a spiral staircase that connected the Fira Square with the level of access to the building. This volume was getting up in the

Design Company / 设计事务所:
Santamaria Arquitectes

Project Architect / 项目设计师:
Pere Santamaria

Location / 地点:

Spain (西班牙)

Area / 面积:

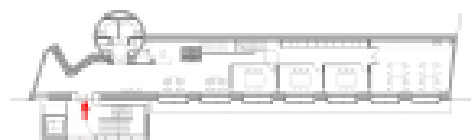
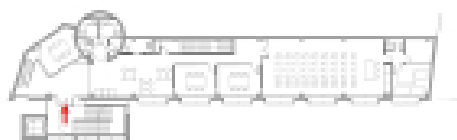
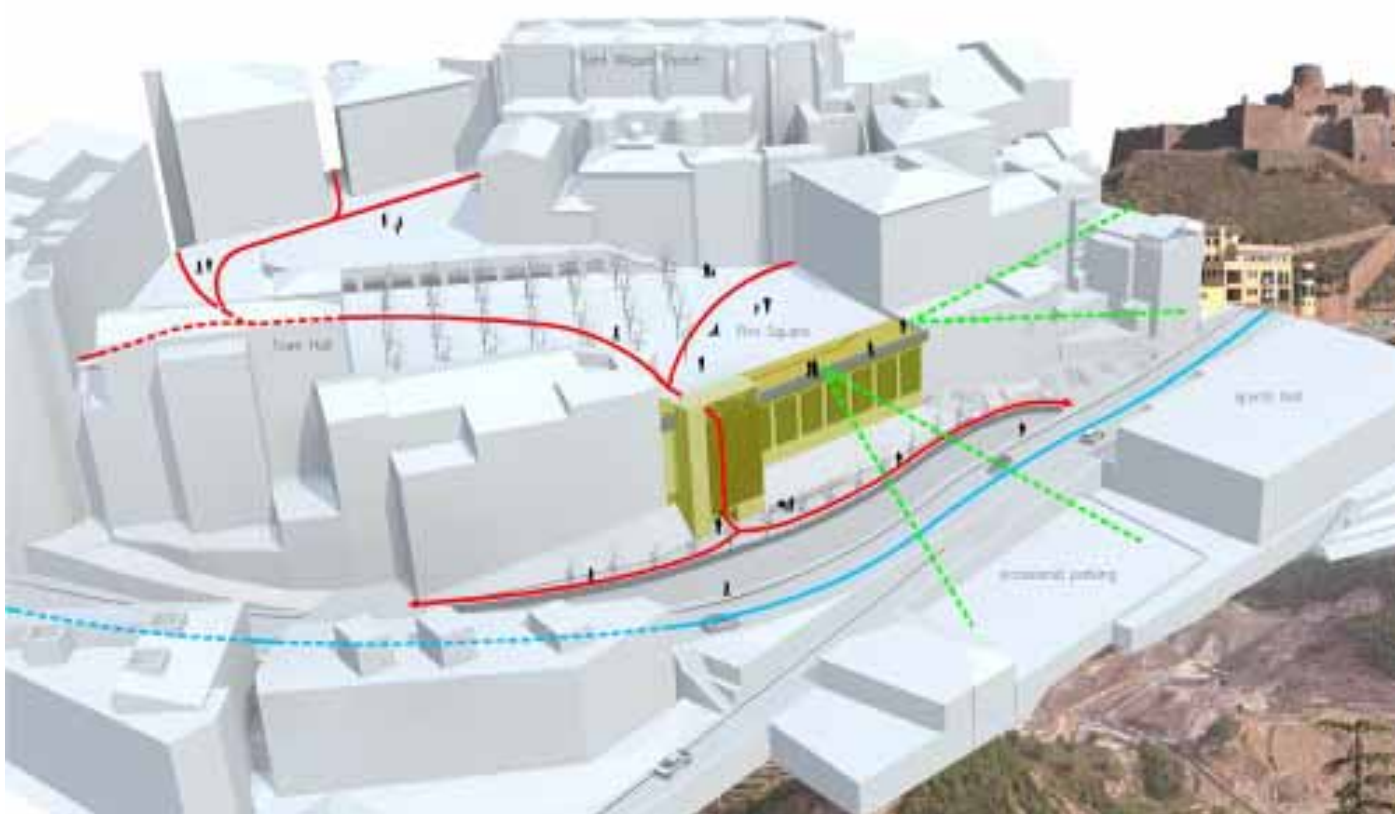
565.46 m²

Photography / 摄影:

Francesc Rubí







square, obstructing the scenic viewpoint placed in the trafficable roof of the building.

The project respects the original volume of the building and only the facade and interiors have been adapted. The volume corresponding to the circular spiral staircase is removed from the trafficable roof to benefit the viewpoint space in the square. Instead of it, a new rectangular volume with staircase and elevator has been attached to the front of the building. The new vertical connections core simultaneously solves the mobility access to each of the floors and it also relates, through a height of 14m, the level of the Fira Square with the lower area of the Miracle road, with sports area and occasional parking.

In order to provide the building with a more significance image, in the south facade windows are joined between the two stories, creating bigger holes emphasized by metal boxes giving depth and strong appearance to the facade. The windows and the new vertical connections core have a double skin consisting of metallic strips to protect the building from south solar radiation and to guarantee the privileged views to the castle and the saline valley.

该建筑从外观上看为长方体结构，总占地面积为282.73 m²。该建筑始建于20世纪60年代菲拉广场的挡土墙坍塌之后，共有两个楼层。改造前，该建筑被用做老年活动中心，一层设置了入口，没有设置电梯，建筑后部设置了螺旋状楼梯，该楼梯将菲拉广场与建筑的入口联系起来。广场的一处观景点设置在了建筑的屋顶上，而该螺旋楼梯阻碍了人们的观景视线。

项目团队充分尊重原有的建筑外观，只对建筑立面和内部结构进行了改造，设计师拆除了螺旋楼梯，以方便人们从建筑的屋顶上欣赏周围的美景。基于此，设计团队在建筑前部打造了一个新的长方体结构，其中设置了楼梯和电梯，以方便人们轻松抵达各个楼层，同时将屋顶广场与街道、运动区、停车区等联系在一起。

为了给整座建筑打造出更加别致的外观，建筑南立面两个楼层的窗户被设计为一个整体，金属框架结构更加凸显了这种设计，进一步强化了立面的特殊设计。窗户和新建的楼梯均为双层板材结构，其中含金属板条，这样可以保护建筑免受南部阳光的直射，还可以使人们欣赏到远处城堡和山谷的美景。

